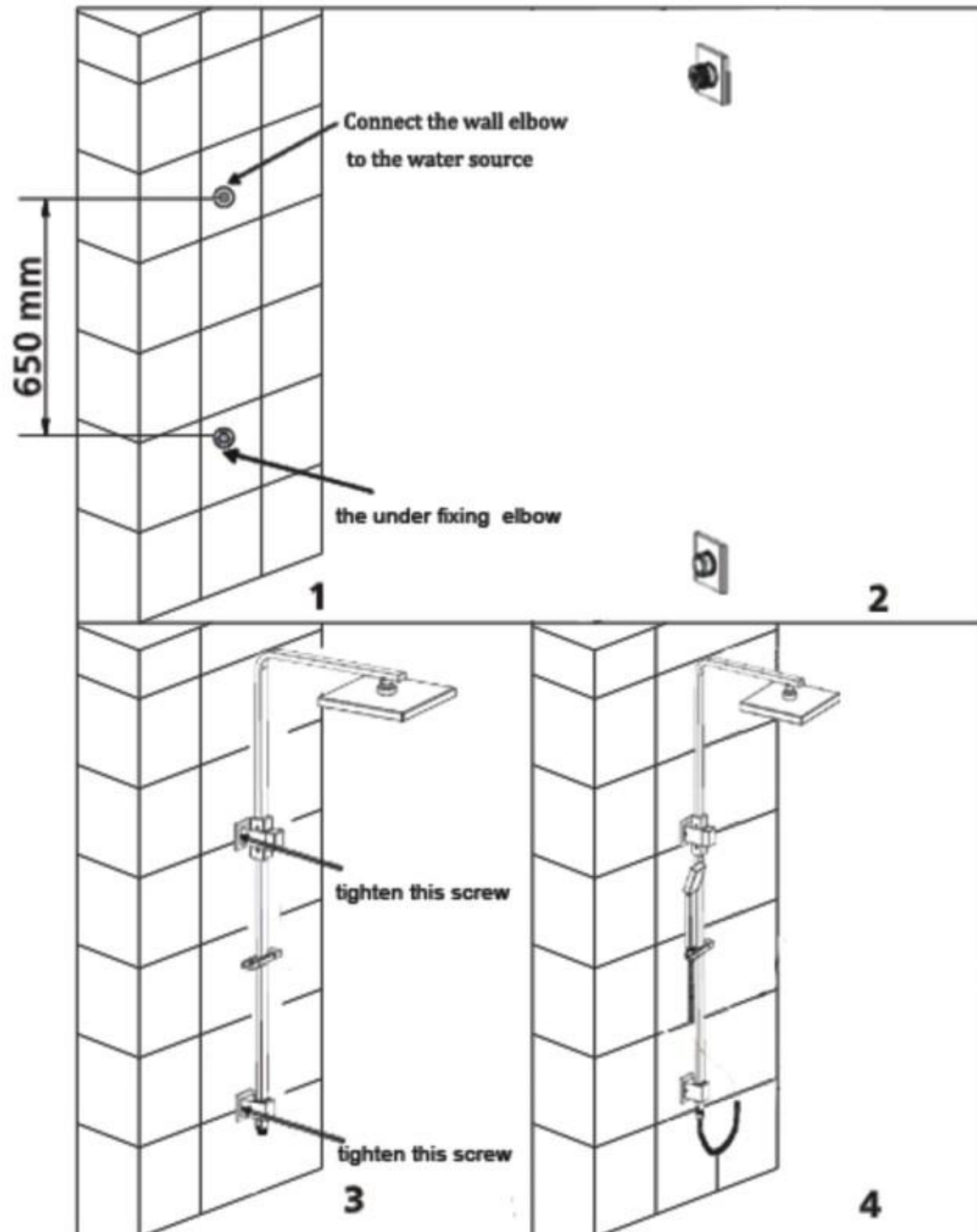


TWO IN ONE SHOWER UNIT(ONE HOSE)

Congratulations for purchasing this quality two in one shower unit. Our product is manufactured to the highest quality under strict quality control procedures.

two in one shower unit



INSTALLATION INSTRUCTIONS

- 1.Connect the wall elbow to the water source on the wall,and install the under fixing elbow with screw;**
- 2.Put the two cover plates to the two elbows;**
- 3.Then install the shower rail to the wall with tighten screws;**
- 4.Connect the handle shower with hose.**

Please be careful during installation.
Avoid scratching the two in one shower unit .

WARRANTY TERMS

All products are guaranteed as follows:

1. 3 years guarantee on shower rails;
2. 2 years guarantee on shower head;
3. 12 months guarantee on accessories and hose;
- 4.12 months guarantee on finish.

GENERAL INFORMATION

The water pressure must be tested. Where the water pressure exceeds 1000Kpa, an approved pressure reducing valve must be fitted.

The warranty will not apply if:

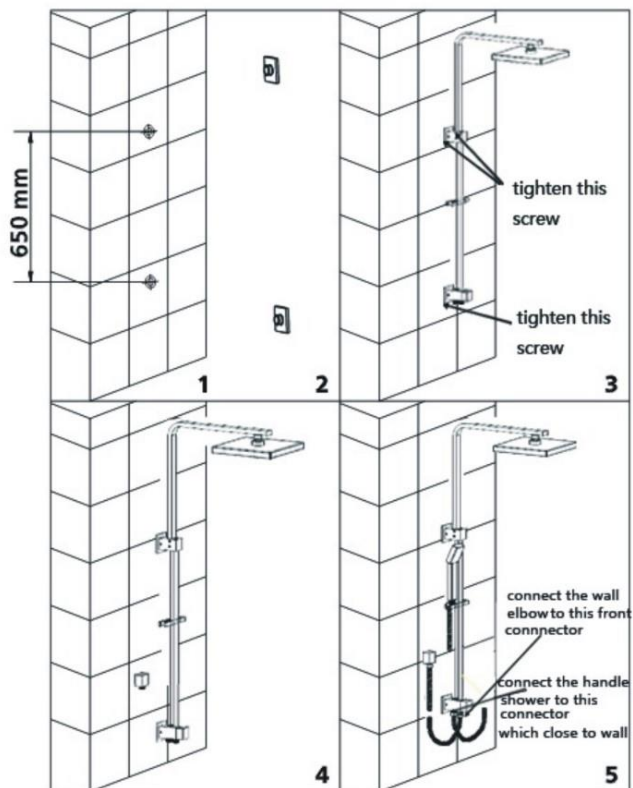
- The product has been damaged through misuse,neglect accident;
- The product has not been used in accordance with any applicable instruction guide;
- The purchaser has attempted to modify or repair the product;
- The product is not installed by a Registered Plumber.



MULTI-FUNCTIONS SHOWER UNIT(TWO HOSES)

Congratulations for purchasing this quality multi-functions column set. Our product is manufactured to the highest quality under strict quality control procedures.

Multi-functions shower unit



INSTALLATION INSTRUCTIONS

1. Install the fixing base on the wall;
2. Install the decor cover on the fixing base;
3. Install the shower rail on the fixing base and tighten it with screw;
4. Install the elbow to the water source on the wall;
5. Connect the handle shower to the connector which close to wall with hose, and connect the wall elbow to the front connector with hose.

**Please be careful during installation.
Avoid scratching the shower column set.**

WARRANTY TERMS

All products are guaranteed as follows:

1. 3 years guarantee on shower rails;
2. 2 years guarantee on shower head;
3. 12 months guarantee on accessories and hose;
4. 12 months guarantee on finish.

GENERAL INFORMATION

The water pressure must be tested. Where the water pressure exceeds 1000Kpa, an approved pressure reducing valve must be fitted.

The warranty will not apply if:

- The product has been damaged through misuse, neglect accident;
- The product has not been used in accordance with any applicable instruction guide;
- The purchaser has attempted to modify or repair the product;
- The product is not installed by a Registered Plumber.